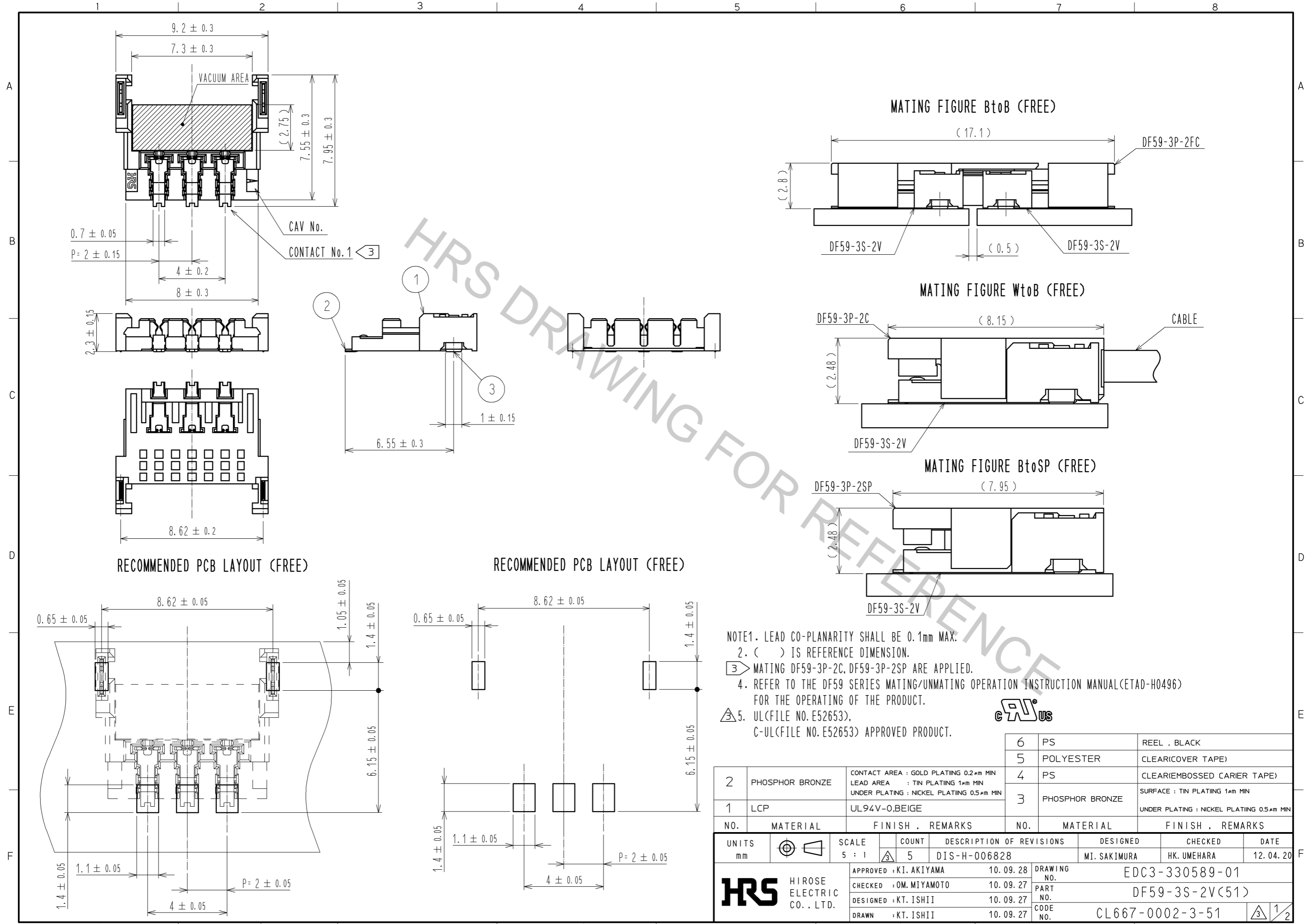


Sep.1.2017 Copyright 2017 HIROSE ELECTRIC CO., LTD. All Rights Reserved.

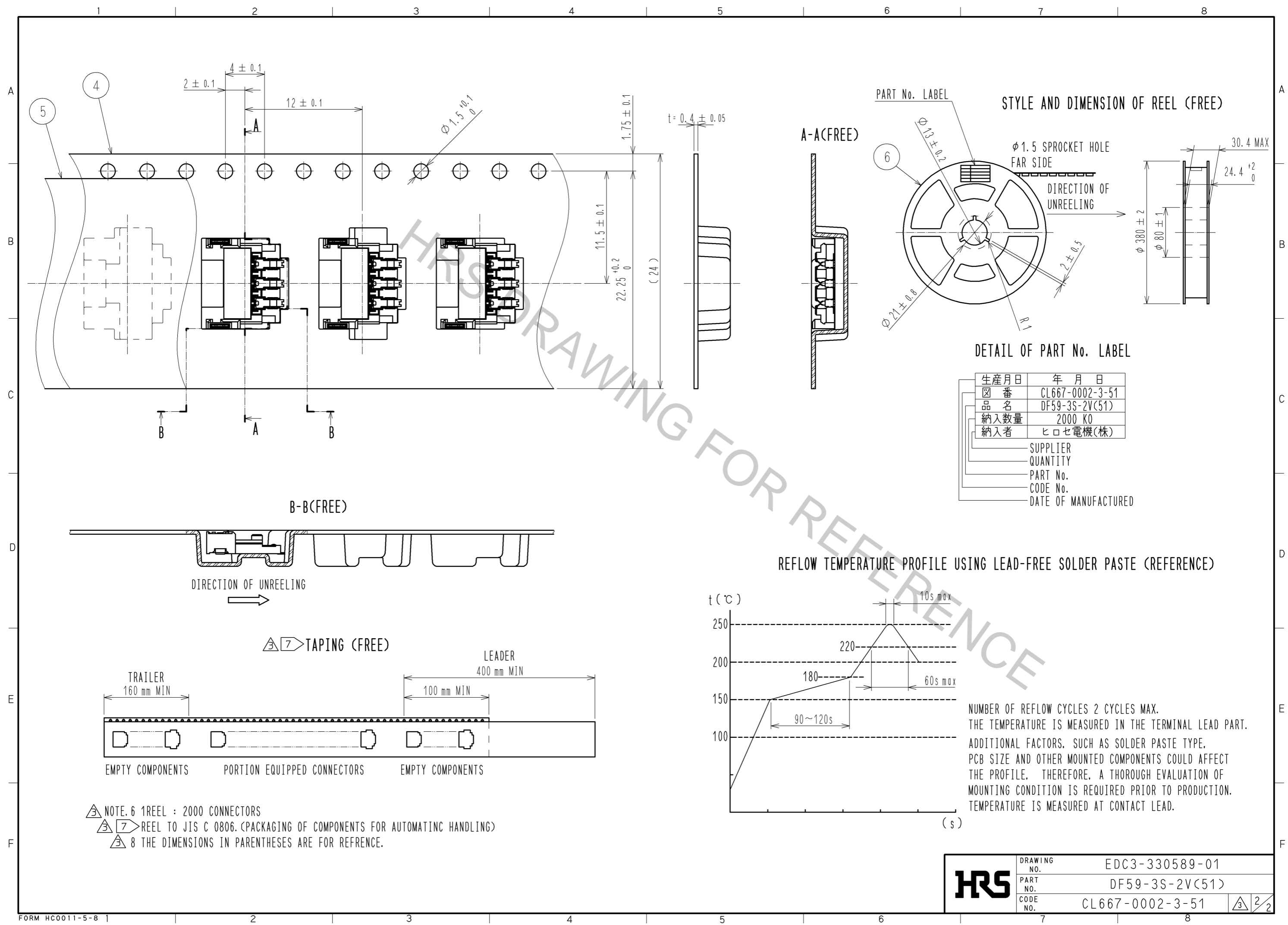


NOTE1. LEAD CO-PLANARITY SHALL BE 0.1mm MAX.
 2. () IS REFERENCE DIMENSION.
 ③ MATING DF59-3P-2C, DF59-3P-2SP ARE APPLIED.
 4. REFER TO THE DF59 SERIES MATING/UNMATING OPERATION INSTRUCTION MANUAL(ETAD-H0496) FOR THE OPERATING OF THE PRODUCT.
 ⑤ UL(FILE NO. E52653), C-UL(FILE NO. E52653) APPROVED PRODUCT.



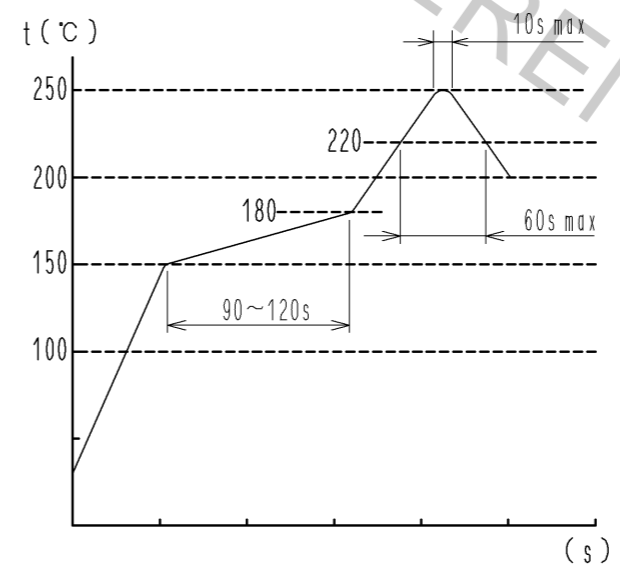
2	PHOSPHOR BRONZE	CONTACT AREA : GOLD PLATING 0.2μm MIN LEAD AREA : TIN PLATING 1μm MIN UNDER PLATING : NICKEL PLATING 0.5μm MIN	6	PS	REEL , BLACK
1	LCP	UL94V-0,BEIGE	5	POLYESTER	CLEAR(COVER TAPE)
			4	PS	CLEAR(EMBOSSSED CARRIER TAPE)
			3	PHOSPHOR BRONZE	SURFACE : TIN PLATING 1μm MIN UNDER PLATING : NICKEL PLATING 0.5μm MIN
NO.	MATERIAL	FINISH , REMARKS	NO.	MATERIAL	FINISH , REMARKS
UNITS		SCALE	COUNT	DESCRIPTION OF REVISIONS	
mm		5 : 1	⑤	DESIGNED	CHECKED
				MI. SAKIMURA	HK. UMEHARA
				DATE	12. 04. 20
				APPROVED : KI. AKIYAMA	10. 09. 28
				CHECKED : OM. MIYAMOTO	10. 09. 27
				DESIGNED : KT. ISHII	10. 09. 27
				DRAWN : KT. ISHII	10. 09. 27
DRAWING NO.			EDC3-330589-01		
PART NO.			DF59-3S-2V(51)		
CODE NO.			CL667-0002-3-51		
			③ 1/2		

Sep.1.2017 Copyright 2017 HIROSE ELECTRIC CO., LTD. All Rights Reserved.



生産月日	年月日
図番	CL667-0002-3-51
品名	DF59-3S-2V(51)
納入数量	2000 KO
納入者	ヒロセ電機(株)
SUPPLIER	
QUANTITY	
PART No.	
CODE No.	
DATE OF MANUFACTURED	

REFLOW TEMPERATURE PROFILE USING LEAD-FREE SOLDER PASTE (REFERENCE)



NUMBER OF REFLOW CYCLES 2 CYCLES MAX.
 THE TEMPERATURE IS MEASURED IN THE TERMINAL LEAD PART.
 ADDITIONAL FACTORS, SUCH AS SOLDER PASTE TYPE,
 PCB SIZE AND OTHER MOUNTED COMPONENTS COULD AFFECT
 THE PROFILE. THEREFORE, A THOROUGH EVALUATION OF
 MOUNTING CONDITION IS REQUIRED PRIOR TO PRODUCTION.
 TEMPERATURE IS MEASURED AT CONTACT LEAD.

- NOTE. 6 1 REEL : 2000 CONNECTORS
- REEL TO JIS C 0806. (PACKAGING OF COMPONENTS FOR AUTOMATIC HANDLING)
- THE DIMENSIONS IN PARENTHESES ARE FOR REFERENCE.

HRS	DRAWING NO.	EDC3-330589-01
	PART NO.	DF59-3S-2V(51)
	CODE NO.	CL667-0002-3-51
		2/2